

OPAL EL WALL – MOUNT

INSTALLATION AND OPERATING INSTRUCTIONS

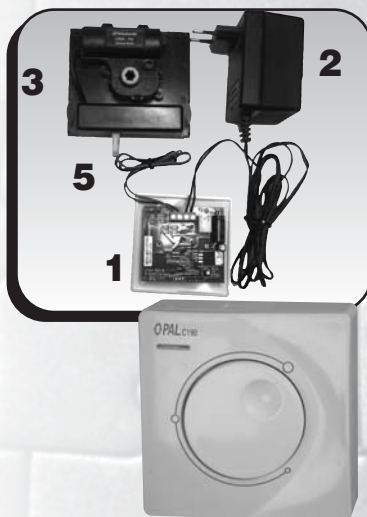
Twitoplast Company thanks you for purchasing the Opal EL –Electrical Operation. The Opal EL device enables zone/room temperature control, by means of adjusting the airflow through the damper. The **Opal EL** device was designed for optimal use to insure both quick installation and comfortable & perfect air condition temperature.

System Configurations

1. Stand Alone:

The **Opal EL** controls one Damper.

- 1 OPAL EL
- 2 Transformer 12 vac only
- 3 C508 Motor
- 4 RJ-11 cable
- 5 Motor cable±



2. As an Integral part of ZC-107 system.

The Opal EL controls one Damper, but has also an affect on the A/C operation it self through the Zone Control System ZC207

Twitoplast Ltd.

<http://www.twitoplast.co.il>



Containing :

- Opal EL – Dimmer.
- RJ-11 Cable.
- Red & Black ±Cable.
- Electrical Motor C508-TW .
- Installation & Operating Instructions.

Please note: 12 VAC Only
Transformer **not included**.
Can be purchased separately.

Twitoplast Ltd.
Grilles & Accessories for Air Conditioning

9 Drezner St. Segula Industrial Zone,
Petach Tikva 49277, ISRAEL
Tel: 972-3-9345888 Fax: 972-3-9042729
e-mail: export@twitoplast.co.il

Twitoplast Ltd.
Grilles & Accessories for Air Conditioning

NEW
OPAL EL

**ELECTRICAL OPERATION
(FOR DAMPER)**

INSTALLATION AND OPERATING
INSTRUCTIONS

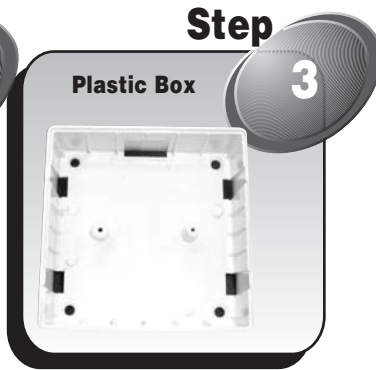


**WALL
MOUNT**

T Q M S
Twito Quick Modular System

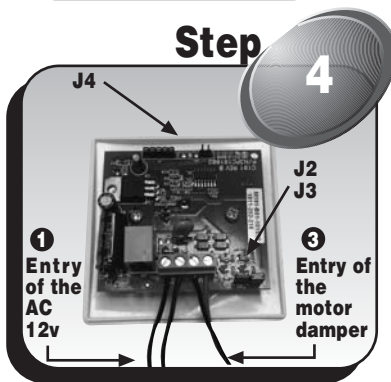
Installation of the Opal EL

Remove the round knob and the screw. fasten the plastic box to the well.
(step 1,2,3)



Connect the:

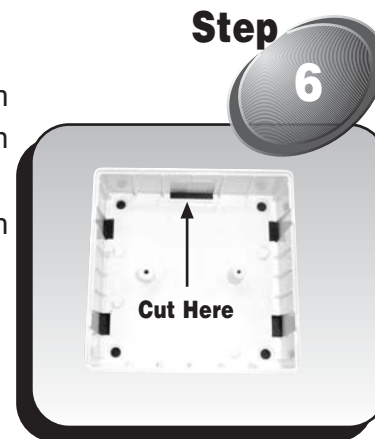
1. 12 v power supply cable from the transformer to the Opal EL.
2. Red & Black ± cable from the Opal EL to the motor (Red one+).
(step 4 & 5).



PLEASE NOTE:
There are two jumpers JP2 & JP3.
Do not Remove the Black Covering.

Take out the wires from the designate place in the plastic box (by cutting the plastic with a knife or drilling)

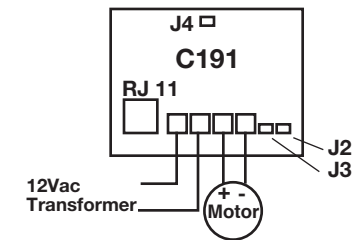
(Step 6)



Put back the front panel of the Opal EL to the plastic box. Assemble the front panel of the Opal EL to its base using the screw. put back the round knob.
(Step 7 & 8)



Connecting Scheme Stand alone



Connection of the OPAL EL to the Zone control System OPAL ZC-207

■ Repeat step 1&2 (stand alone).

■ Step1:

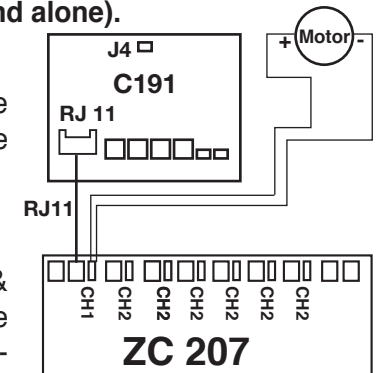
Connect the RJ-11 Cable from the Opal EL to one of the channels on ZC-207

Step2:

Connect one Black & Red Cable ± from the motor damper to the ZC-207 channel near the RJ-11 (Red wire one+).

Step3:

Remove Black covering from jumpers JP2 and JP3. and add one of them to Jumper J4 (see pic. 4).



■ Repeat steps 7&8

TIL Twitoplast Ltd.

9 Drezner St. Segula Industrial Zone,
Petach Tikva 49277, ISRAEL
Tel: 972-3-9345888 Fax: 972-3-9042729
e-mail: export@twitoplast.co.il

!!! п.4. Подсоединение проводов к Oral EL

1. Черный провод от адаптера переменного тока AC/AC подсоединить к разъему «12 V».
2. Красно-черный провод подсоединить к разъему «- M +», причем **красный** к «+», а **черный** к «-»