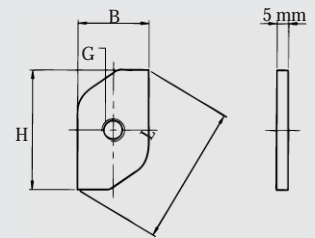
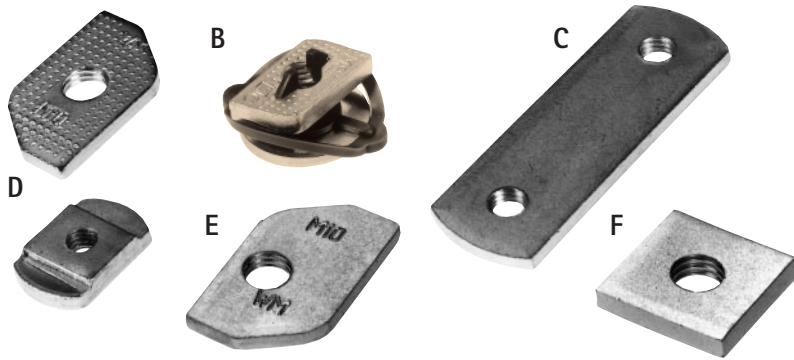
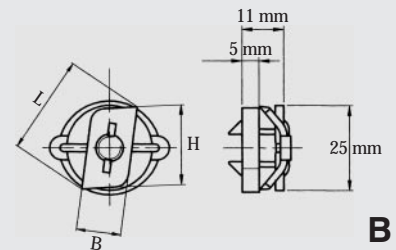


для крепления на
шинах монтажных

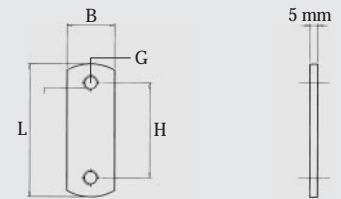


A

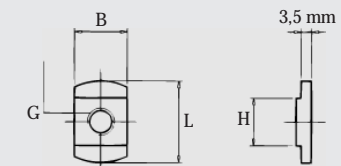
***WM* RapidRail®**



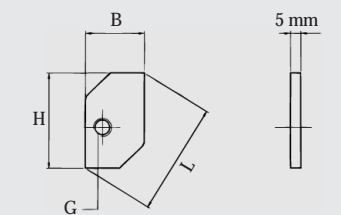
B



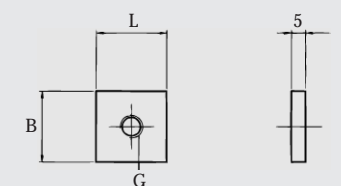
C



D



E



F

RapidRail®
RapidRail®
RapidRail®
RapidRail®
RapidRail®
RapidRail®

êàò. Û ðñ. G	L (ì ì)	B (ì ì)	H (ì ì)	s (ì ì)	äëß øëí ù							S T ðäëí íá. íäððçä (N)	
					W M 0	W M 1	W M 15	W M 2	W M 30	W M 14	W M 3		
651 3 006 A M6	31,6	15,0	23,0	-	+	o	o	o	o	-	-	-	3100
651 3 008 A M8	31,6	15,0	23,0	-	+	o	o	o	o	-	-	-	3100
651 3 010 A M10	31,6	15,0	23,0	-	+	o	o	o	o	-	-	-	3100
651 3 106 B M6	29,0	13,0	23,0	-	+	+	+	+	+	-	-	-	2000
651 3 108 B M8	29,0	13,0	23,0	-	+	+	+	+	+	-	-	-	2700
651 3 110 B M10	29,0	13,0	23,0	-	+	+	+	+	+	-	-	-	2900
651 4 106 B M 6	38,7	15,8	33,0	-	-	-	-	-	-	+	-	-	3500
651 4 108 B M 8	38,7	15,8	33,0	-	-	-	-	-	-	+	-	-	3500
651 4 110 B M10	38,7	15,8	33,0	-	-	-	-	-	-	+	-	-	3500
651 3 208 C M8(2x)	74,0	23,0	50,0	-	-	+	+	+	+	o	-	-	4250
651 3 408 C M8(4x)	174,0	25,0	50,0	-	-	+	+	+	+	o	-	-	-
651 5 208 C M8(2x)	80,0	30,0	50,0	-	-	-	-	-	-	+	o	-	-
651 5 210 C M10(2x)	80,0	40,0	50,0	-	-	-	-	-	-	-	+	-	-
651 9 006 D M6	24,5	15,5	13,5	-	o	+	+	+	+	-	-	-	3100
651 9 007 D M7x1,0	24,5	15,5	13,5	-	o	+	+	+	+	-	-	-	3100
651 9 008 D M8	24,5	15,5	13,5	-	o	+	+	+	+	-	-	-	3100
651 9 010 D M10	24,5	15,5	13,5	-	o	+	+	+	+	-	-	-	3100
651 5 006 E M6	48,5	25,0	42,0	-	-	-	-	-	-	+	+	o	3000
651 5 008 E M8	48,5	25,0	42,0	-	-	-	-	-	-	+	+	o	3000
651 5 010 E M10	48,5	25,0	42,0	-	-	-	-	-	-	+	+	o	3000
651 5 012 E M12	48,5	25,0	42,0	-	-	-	-	-	-	+	+	o	3000
651 9 910 F M6	25,0	25,0	-	4,0	-	+	+	+	+	-	-	-	3100
651 9 911 F M8	25,0	25,0	-	4,0	-	+	+	+	+	-	-	-	3800
651 9 912 F M10	25,0	25,0	-	5,0	-	+	+	+	+	-	-	-	6300
651 9 913 F M12	25,0	25,0	-	5,0	-	+	+	+	+	-	-	-	6300

+ = ðäëí íá íä ðäí í 0 = íí äöí äèò - = íá íí äöí äèò